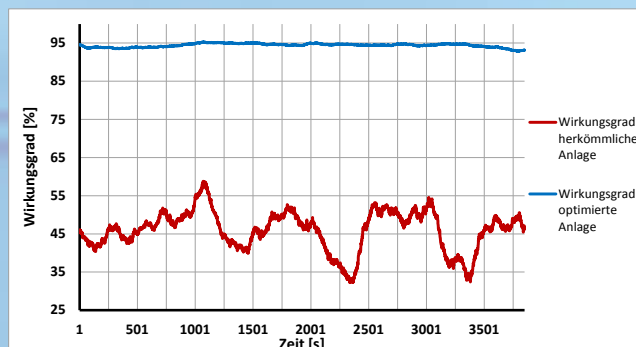


Circuit diagram of the optimized system

- Waste heat recovery in pellet heating systems for efficient use in detached and semi-detached houses
- Extraction of heat energy directly from the exhaust gas and simultaneous supply to the heating cycle
- Through the heat exchanger, residual energy is supplied to the inlet air
- Increase of the overall efficiency in continuous operation compared to a standard available system from the current 55% up to 95%
- Increasing the heat flow capacity of the system using heat recovery by an average of 10 kW
- Larger quantity of heat available with the same consumption of pellets respectively the same available amount of heat with less consumption of pellets



Efficiency curve during continuous operation