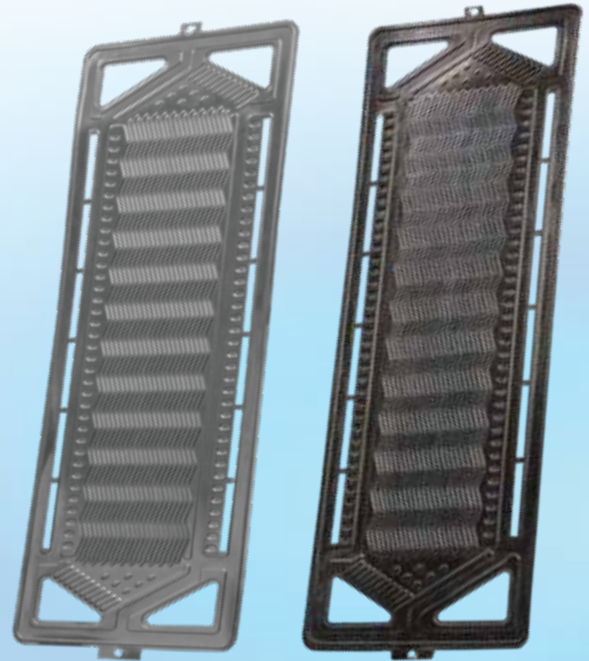


Large-scale production

Production Facilities for Bipolar Plates:

- Large-scale manufacturing process
- Lead time: 3 seconds
- Large-scale forming processes
- Automated laser welding
- Coating (durability: >5000 h)
- Sealing application on the bipolar plate
- Wall thickness from 50 µm to 100 µm
- Materials: high-grade steel and titanium



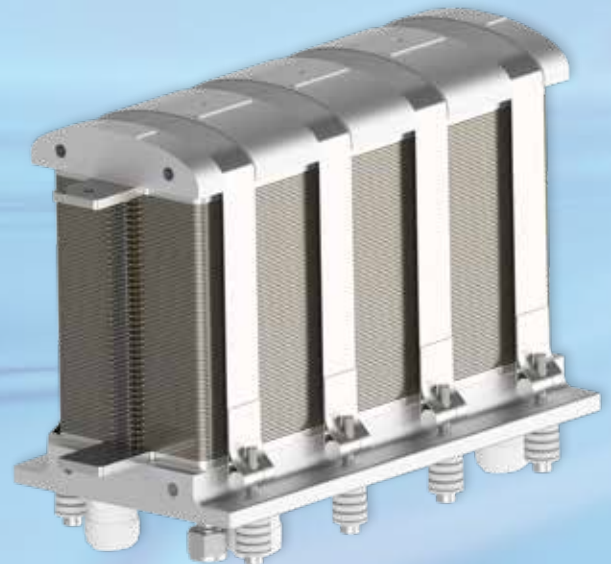
Bipolar plate uncoated

Bipolar plate coated

Fuel Cell Stack and production Facilities for MEA¹

- Fully automated Fuel Cell Stack assembly
- 7 layer MEA inline production in realization

¹ Membrane Electrode Assembly



Low Temperature PEM Fuel Cell Stack